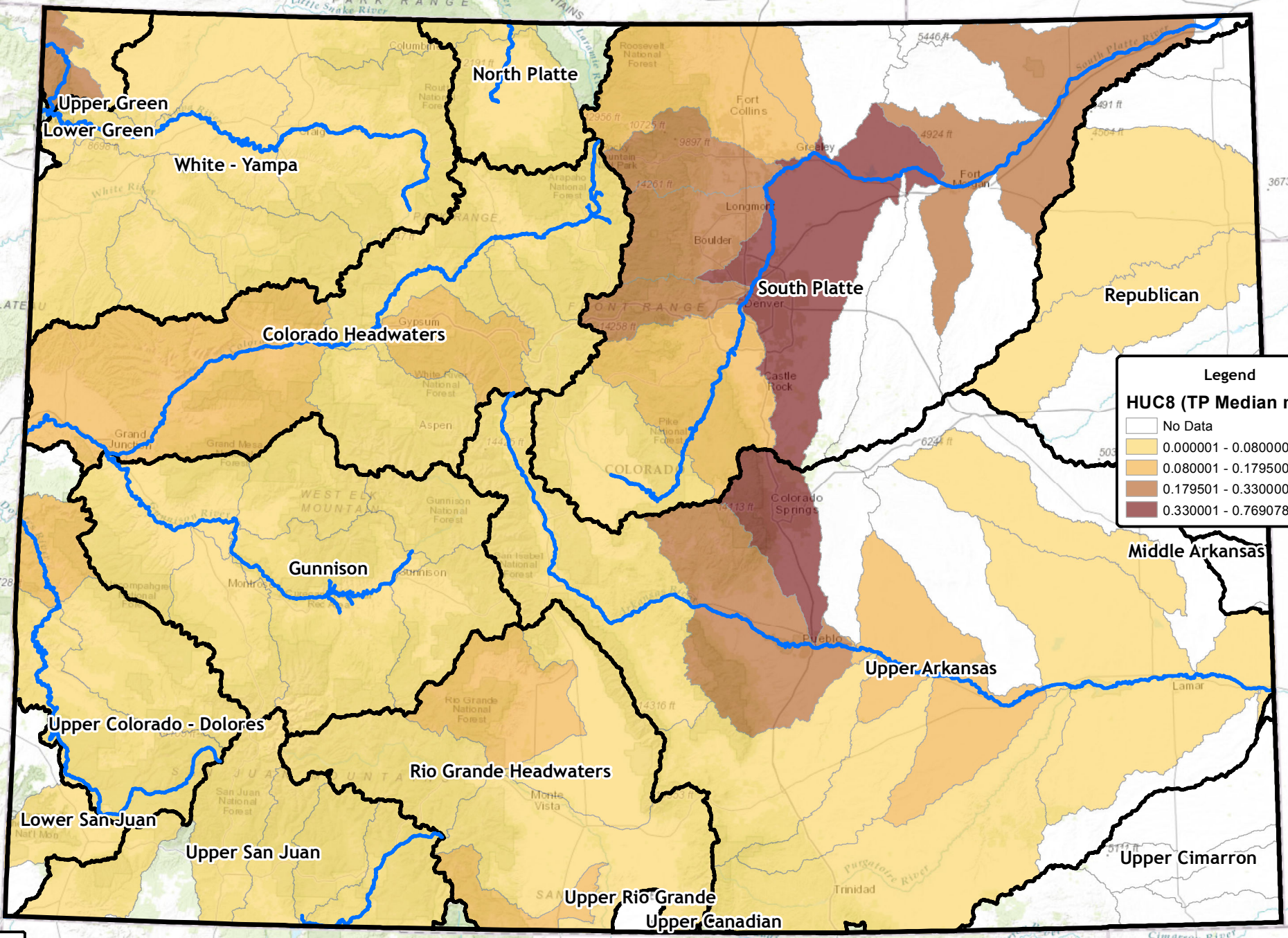


Colorado Total Phosphorus by HUC8 (2010)



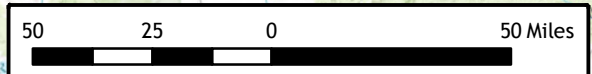
Legend

HUC8 (TP Median mg/L)

- No Data
- 0.000001 - 0.080000
- 0.080001 - 0.179500
- 0.179501 - 0.330000
- 0.330001 - 0.769078



Use constraints: There are no restrictions and legal prerequisites for using this data set. The state of Colorado assumes no liability to the completeness, correctness, or fitness for use of this data set.



Date: 4/20/2017
 Author: Scott McGowan

